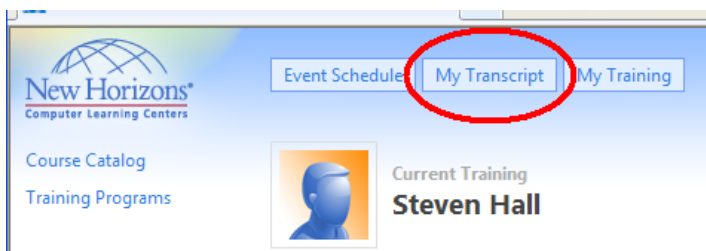


How to Access Mentored Learning Labs Remotely Using the Content Management System (CMS)

1. Open Internet Explorer Web browser application
2. Login at <http://ml.newhorizons.com> (notice, the URL will redirect)
3. Click on the "My Transcript" link

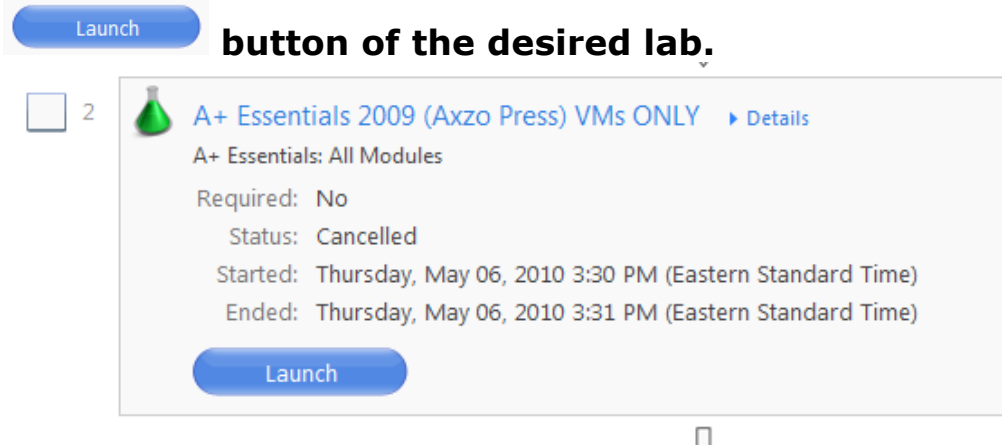


4. Click on the link of the course whose labs you wish to launch.

A screenshot of the 'Student Transcript' page for Steven Hall in the CMS.NET system. The page shows a list of completed classes and ML course assignments. The 'My Transcript' link in the navigation bar is circled in red. Below, the 'ML Course Assignments (2)' section contains a table with two rows. The first row, 'CompTIA A+ Certification: Essentials, 2009 Edition (Axzo Press)', is circled in red. The second row is 'CompTIA A+ Certification: Practical Application (220-702), 2009 Edition (Axzo Press)'.

ML Course	Status	Started	Completed
CompTIA A+ Certification: Essentials, 2009 Edition (Axzo Press)	Incomplete	5/6/2010	
CompTIA A+ Certification: Practical Application (220-702), 2009 Edition (Axzo Press)	Not started		

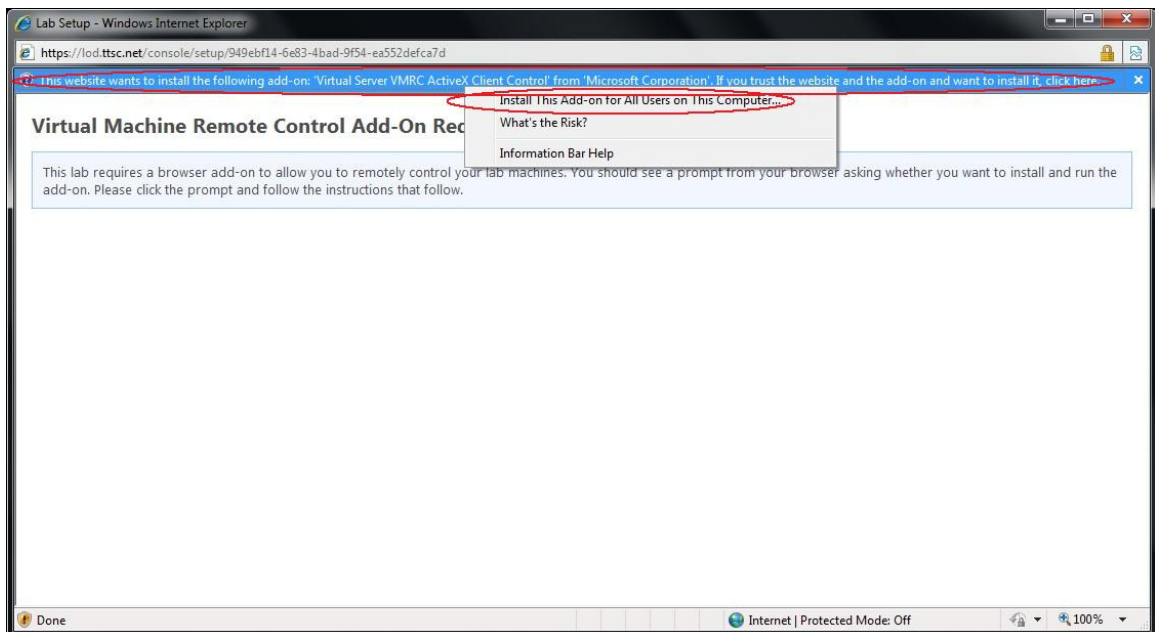
5. Scroll through the list of available labs and click on the **Launch** button of the desired lab.



Note: You *must* have accessed the lab at least once during a Mentored Learning Session to access the lab remotely.

6. You must use an Internet Explorer browser, and, you will be prompted to install an ActiveX control.

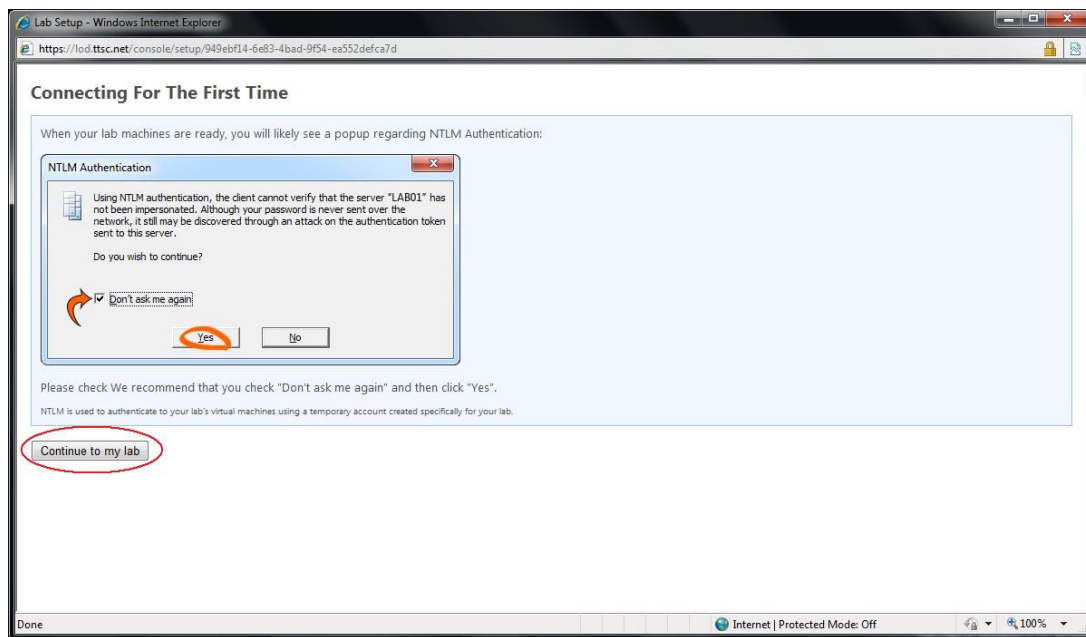
You will see a faint ribbon at the top of your browser screen. Click on the ribbon to reveal the "Install This Add-on for All Users on This Computer..." item.



7. If you receive a warning at the VMRC ActiveX Client Control install prompt click on "Install".



8. You must click on the "Continue to my Lab" button when you arrive at the "Connecting for the First Time" page.



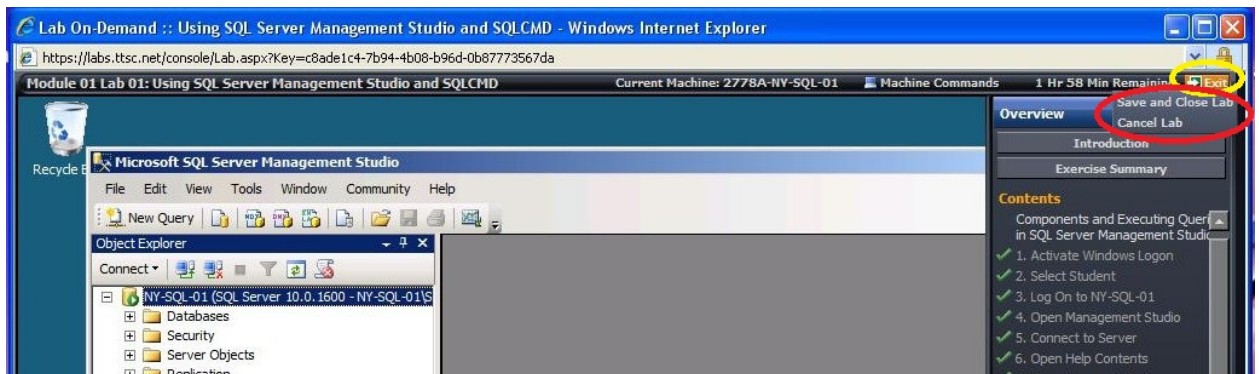
9. At the "Unencrypted Connection" prompt click on the "Don't ask me again" check box.



10. At the "NTLM Authentication" prompt click on the "Don't ask me again" check box.



11. To save your current lab state click on the "Exit" button in the far upper right of the lab environment, and then click "Save and Close Lab".



12. Confirm your intent to save the lab state by clicking on the "Yes" button.

